A world map is centered in the background, overlaid with a light gray network of interconnected lines forming a mesh pattern. The map is rendered in a light gray tone, matching the network lines. The overall background is white.

SNFI Market Monitoring & Shelter Distribution Point Flood Risk Analysis

REACH activities

Jan 2026



SNFI MM Contents

- 
- 01** SNFI Objectives
 - 02** Markets Location
 - 03** Item Prices and Availability
 - 04** E-wallet Acceptance
 - 05** Supply Chain and Vendor Challenges
 - 06** Conclusion

A decorative network graphic in the top-left corner, consisting of a series of interconnected nodes and lines. The nodes are represented by small circles in shades of red and grey, and the lines are thin, light grey. The network is partially visible, extending from the left edge towards the center.

01

Objective and Methodology

A decorative network graphic in the bottom-right corner, similar to the one in the top-left. It features a complex web of interconnected nodes and lines. The nodes are small circles in red and grey, and the lines are thin and light grey. The network is partially visible, extending from the right edge towards the center.

Objective & Methodology

01

Objective

- Provide evidence-based data to **support** humanitarian cash-based programming and CVA planning.
- Monitor **prices and availability** of basic shelter and household items in Gaza.
- Identify market and **SNFI vendor challenges** and adaptations, including supply chain disruptions.
- Show detailed **market locations** and shops type.

02

Methodology

- Training: 11th Dec
- Data Collection: 13th-18th Dec
- **732** KI interviews with vendors
- **55** targeted market locations identified by a previously conducted market mapping exercise and complemented through **field team insights**.
- In close collaboration with CMS TWG and partners involved.
- Data Tools and Processing: Collected via Kobo Collect; cleaned and validated using Excel and R.

03

Limitations

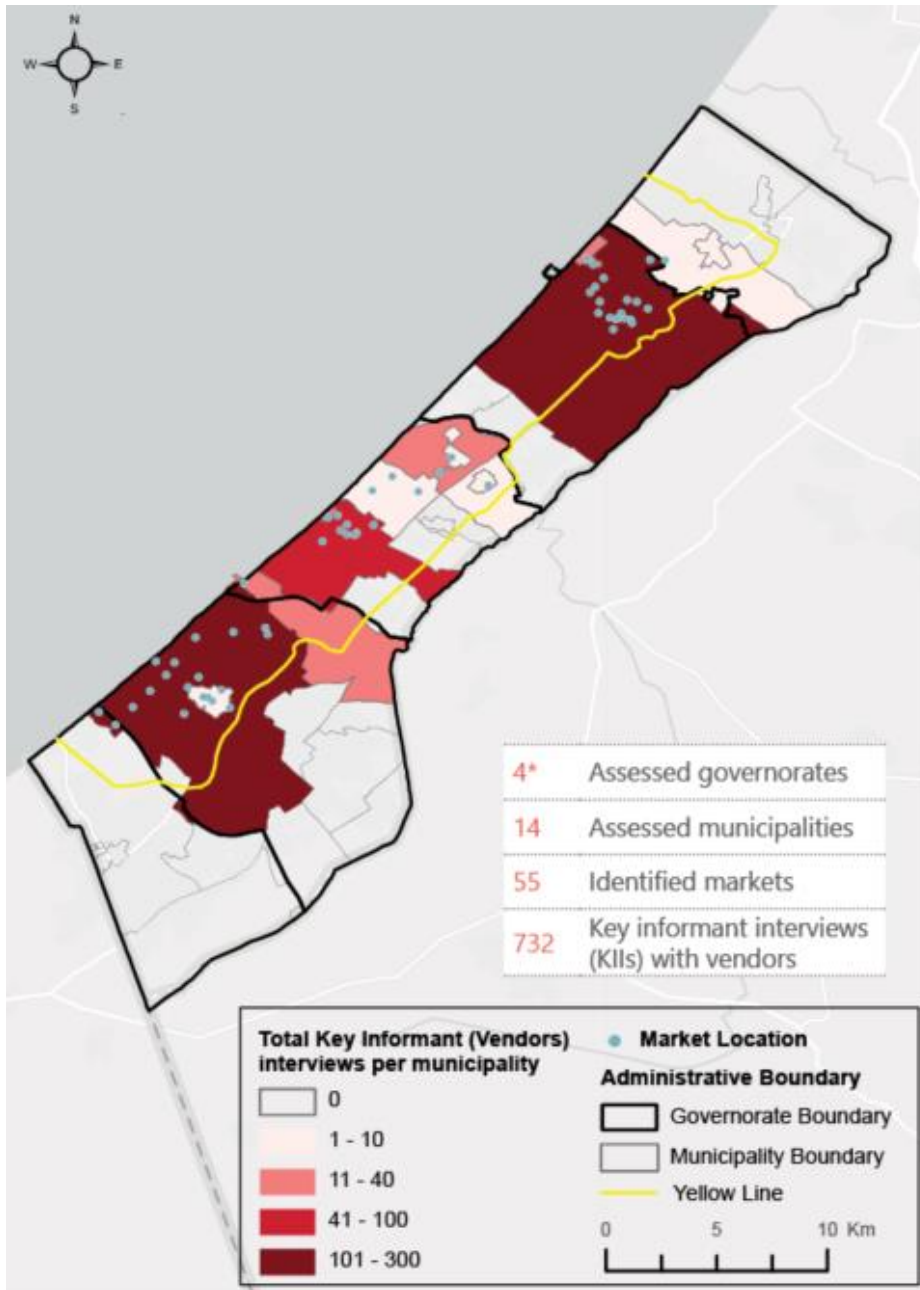
- Market access issues:
 - North Gaza & Rafah
 - Weather related
- Low Sample size for certain items/markets – reduced reliability and confidence intervals
- Data is purposive and not statistically representative.
- Predefined measurement units did not always align with how items were available or commonly sold in markets, which may affect comparability of price and availability data across locations.



02

Market Mapping





* Limited coverage in Northern Gaza governorate.

Market Location

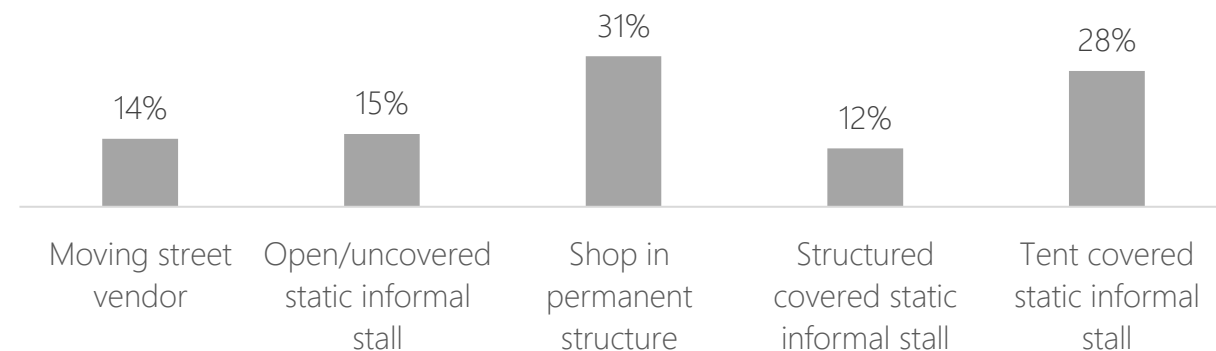
Factsheet objective:

- By municipality showing a more detailed version of number of interviewed vendors.
- Showing the recent markets location.

Future Comparison

- Identify movement behaviours of markets over time.
- Identify new emerging markets and those that ceased to exist.
- Utilising KI network of ~800 SNFI vendors

Number of Vendors Assessed by Type





03

Key Findings



Key Findings

1. Tent Prices and Quality:

- Humanitarian-standard geodesic tents are waterproof and structurally stable, suitable for harsh weather conditions. In contrast, lower-quality tents are non-waterproof, made of lighter material, and lack structural integrity, making them unsuitable and likely to require frequent replacement. These quality differences explain the substantial price gap (lower-quality tents being approximately 3–6 times cheaper) and highlight why **aggregated price and availability data alone does not reflect actual shelter needs.**

2. Shelter Repair Items:

- Considering the significant differences in tent quality and the impact of ongoing storms, there is an urgent need for shelter repair items such as sandbags, plastic sheeting, high-quality tarpaulin, heavy-duty adhesive tape, and timber - **all of which were reported as having low availability across markets.**

3. Market Accessibility:

- Vendors reported significant operational constraints due to **sewage water obstructing access, hazardous or conflict-damaged structures, limited transportation, damaged roads, and adverse weather conditions**, all reducing the movement of goods and customer footfall.

4. Price Volatility:

- Prices remain **high and volatile**, driven by increased winter demand and continued restrictions on shelter aid truck entry. Anticipated or active storms further exacerbate price fluctuations for shelter and household items..



03

Item Prices and Availability

Shelter and Household Items List & Median Prices

1. Quality Distinction

2. Prices of tents & quality issues

Items	Unit	North*	Middle	South*
Energy				
Fuel (Deisel)	1 L	50	54	55
Firewood	1 kg	5	6	5.25
Gas cylinder	8 kg	65	60	75
Gas (parallel market)	1 kg	87	95	100
Plastic fuel	1 L	25	No data	25
Winter Items				
Winter Jacket	1 un	140	100	120
Winter boots	1 un	80	100	80
Shelter Items				
Plastic sheeting	1 m2	4.7	4.5	13
High quality tarpaulin	1 m2	5	5	4
Lower quality tarpaulin	1 m2	3.3	3.5	3
Heavy adhesive duct tape	1 un	15	15	15
Regular adhesive duct tape	1 un	8	10	10
Nylon Rope (3-5 mm)	1 m	1	1	1
Nylon Rope (6-8 mm)	1 m	1	1.5	1
Geodesic tents	1 un	2000	2000	1800
Lower quality tents	1 un	400	350	500
Nails 20mm	1 kg	90	130	100
Nail 40-60 mm	1 kg	90	100	80
Sandbags	1 un	3	4	5
Timber	1 m	23	20	24
Household Items				
Winter blanket	1 un	20	25	25
Mattress	1 un	110	125	100
Mat	1 un	200	175	80
Spoon	1 un	1.7	1.4	1.2
Knife	1 un	7	6	5
Stainless steel cooking pot (5 Liters)	1 un	60	65	70
Stainless steel serving dish	1 un	7	5	5
Stainless steel cups	1 un	4	5	5
Solar light	1 un	270	560	500

Shelter and Household Items Availability

Items	Al-Bureij	Al- Bureij Camp	Al-Qarara	An Nuseirat	An Nuseirat Camp	Al-Shati' Camp	Az Zaway-da	Deir al Balah	Deir al Bal-ah Camp	Gaza	Jabalya	Jabalya Camp	Khan Younis	Khan Younis Camp
Energy														
Fuel (Deisel)	*	●	●	●	*	●	●	●	●	●	●	*	●	●
Firewood	*	●	●	●	*	●	●	●	●	●	●	*	●	●
Gas cylinder	*	●	●	●	*	●	●	●	●	●	●	*	●	●
Gas (parallel market)	*	●	●	●	*	●	●	●	●	●	●	*	●	●
Plastic fuel	*	●	●	●	*	●	●	●	●	●	●	*	●	●
Winter Items														
Winter Jacket	*	●	●	●	●	●	*	●	●	●	●	●	●	●
Winter boots	*	●	●	●	●	●	*	●	●	●	●	●	●	●
Shelter Items														
Plastic sheeting	*	*	●	●	●	●	●	●	●	●	●	*	●	*
High quality tarpaulin	*	*	●	●	●	●	●	●	●	●	●	*	●	*
Lower quality tarpaulin	*	*	●	●	●	●	●	●	●	●	●	*	●	*
Heavy adhesive duct tape	*	*	●	●	●	●	●	●	●	●	●	*	●	*
Regular adhesive duct tape	*	*	●	●	●	●	●	●	●	●	●	*	●	*
Nylon Rope (3-5 mm)	*	*	●	●	●	●	●	●	●	●	●	*	●	*
Nylon Rope (6-8 mm)	*	*	●	●	●	●	●	●	●	●	●	*	●	*
Geodesic tents	*	*	●	●	●	●	●	●	●	●	●	*	●	*
Lower quality tents	*	*	●	●	●	●	●	●	●	●	●	*	●	*
Nails 20 mm	*	*	●	●	●	●	●	●	●	●	●	*	●	*
Nail 40-60 mm	*	*	●	●	●	●	●	●	●	●	●	*	●	*
Sandbags	*	*	●	●	●	●	●	●	●	●	●	*	●	*
Timber	*	*	●	●	●	●	●	●	●	●	●	*	●	*
Household Items														
Winter blanket	●	*	●	●	●	●	*	●	●	●	●	●	●	●
Mattress	●	*	●	●	●	●	*	●	●	●	●	●	●	●
Mat	●	*	●	●	●	●	*	●	●	●	●	●	●	●
Spoon	●	*	●	●	●	●	*	●	●	●	●	●	●	●
Knife	●	*	●	●	●	●	*	●	●	●	●	●	●	●
Stainless steel cooking pot (5 L)	●	*	●	●	●	●	*	●	●	●	●	●	●	●
Stainless steel serving dish	*	*	●	●	●	●	*	●	●	●	●	●	●	●
Stainless steel cups	*	*	●	●	●	●	*	●	●	●	●	●	●	●
Solar light	●	*	●	●	●	●	*	●	●	●	●	●	●	●

The colors in this table indicate the majority response from vendors. If an item is reported as unavailable by the majority of vendors, it is marked in red. Similarly, green indicates availability, and yellow indicates limited availability.

- Reported item availability is based on vendors' perceptions at the time of data collection. Vendors assessed the availability of item categories corresponding to the goods they sell (e.g. vendors selling fuel and firewood reported on energy items).
- Item availability fluctuates frequently; findings therefore reflect availability during the week of data collection only.
- In December, most shelter and household items were reported as having limited availability with fuel consistently reported as having low availability across all assessed municipalities.

Shelter and Household Items Prices (ILS)

Items	Unit	Al-Burei	Al- Bureij Camp	Al-Qarara	An Nuseirat	An Nuseirat Camp	Al-Shati' Camp	Az Zaway-da	Deir al Balah	Deir al Balah Camp	Gaza	Jabalya	Jabalya Camp	Khan Younis	Khan Younis Camp
Energy															
Fuel (Deisel)	1 L	*	*	50	60	*	*	53	55	45	50	*	*	55	55
Firewood	1 kg	*	*	5	*	*	5	5	4.75	6	5	*	*	5.5	*
Gas cylinder	8 kg	*	60	56	*	*	*	*	*	*	65	65	*	75	75
Gas (parallel market)	1 kg	*	*	92.5	*	*	85	*	*	95	88.5	80	*	100	100
Plastic fuel	1 L	*	*	*	*	*	*	*	*	*	25	*	*	26	25
Shelter Items															
Plastic sheeting	1 m2	*	*	*	4.5	*	*	8	*	4	4.7	*	*	13	*
High quality tarpaulin	1 m2	*	*	3.75	5	*	5	*	4.3	5	5	*	*	4.2	*
Lower quality tarpaulin	1 m2	*	*	*	3	*	*	*	4.5	2.5	3.3	*	*	3	*
Heavy adhesive duct	1 un	*	*	15	22.5	*	*	25	11.5	20	15	*	*	15	*
Regular adhesive duct	1 un	*	*	10	11	7.5	*	10	10	15	8	*	*	10	*
Nylon Rope (3-5 mm)	1 m	*	*	0.9	2	*	*	2	1	1.75	1	*	*	1	*
Nylon Rope (6-8 mm)	1 m	*	*	1.4	3.75	*	*	*	1	2.25	1	3	*	1	*
Geodesic tents	1 un	*	*	*	*	*	*	*	2000	2000	2000	2000	*	1800	*
Lower quality tents	1 un	*	*	*	300	*	350	*	350	400	400	*	*	500	*
Nails 20mm	1 kg	*	*	120	200	*	*	130	115	100	90	*	*	100	*
Nail 40-60 mm	1 kg	*	*	80	200	*	*	80	65	100	90	90	*	80	*
Sandbags	1 un	*	*	*	*	*	*	*	4	*	3	*	*	5	*
Timber	1 m	*	*	*	30	*	*	10	*	*	23	*	*	24	*
Household Items															
Winter blanket	1 un	*	*	*	25	*	17.5	*	*	20	20	*	20	25	40
Mattress	1 un	75	*	*	130	*	100	*	*	*	110	*	*	100	*
Mat	1 un	*	*	*	200	*	200	*	*	100	210	400	*	80	8
Spoon	1 un	*	*	1	2	2.5	2	*	1.1	1.5	1.6	*	*	1.2	1.25
Knife	1 un	*	*	*	5	6.5	5	*	7	5	7	*	*	5	7
Stainless steel cooking	1 un	*	*	*	50	55	120	*	90	35	60	*	*	70	75
Stainless steel serving	1 un	*	*	*	7.5	5	8	*	5	5	7	*	*	5	6
Stainless steel cups	1 un	*	*	*	5	5	5	*	6.5	10	4	*	*	5	9

This table presents median item prices by municipality, expressed in Shekels (ILS). Prices for winter specific items like blankets and boots are not included due to high price variability within the same municipality.

* No data (commodity unavailable).

- In line with seasonal trends, winter conditions in Gaza have exacerbated existing vulnerabilities, with heavy rainfall and ongoing economic pressures leaving an estimated 1.28 million people in need of emergency shelter and household items.
- During the data collection period, vendors reported low availability of key shelter and household items including tents, tarpaulins, winter blankets, mats, and mattresses which likely contributed to elevated prices in locations where these items were available, reflecting increased demand amid constrained supply and rising needs.
- Prices for shelter and household items were highly variable, primarily depending on quality, country of origin, and availability. For example, winter jackets ranged from 70 ILS to 150 ILS, reflecting differences in material and source. Mat prices, though limited in availability, varied between 200–400 ILS. Solar lights ranged from 130 ILS to 560 ILS, and 5-litre stainless steel cooking pots were reported between 50 ILS and 120 ILS, with variations largely driven by brand, country of origin, and market availability.



04 E-wallet Acceptance

E-wallet Acceptance

Percentage of vendors that accept any of the following types of payment from their customers

95% of vendors accept cash (ILS)

80% of vendors accept mobile money/e-wallet

11% of vendors accept bank money transfers

3% of vendors accept vouchers/e-vouchers

Moreover, a small proportion of SNFI vendors reported accepting alternative payment modalities, with 2% accepting cash in foreign currencies or informal credit, and 1% reporting acceptance of barter transactions.

E-wallet Acceptance by Vendor Type and Governorate

	Overall	Khan Younis	Deir al Balah	Gaza
Moving street vendor	60%	66%	83%	45%
Open/uncovered static informal stall	71%	68%	100%	64%
Tent covered static informal stall	70%	71%	73%	65%
Structured covered static informal stall	90%	91%	100%	77%
Shop in permanent structure	98%	98%	100%	98%

Governorates with the highest percentage of vendors accepting e-Wallets

1 Deir al Balah (**94%**)

2 Gaza city (**78%**)

3 Khan Younis (**76%**)



Reasons for not accepting the e-wallet/mobile money

- The most commonly reported reason was that the wholesalers they transact with do not accept e-wallet payments (37%). This was followed by vendors' preference not to use e-wallets (33%), lack of an account to receive mobile money payments (22%), and limited knowledge on how to use these platforms (8%).
- Vendors reported continuing to rely on cash, as they needed it to pay wholesalers who do not accept digital payments.
- some vendors indicated being compelled to use e-wallets amid challenges with physical cash, including the prevalence of torn or unusable banknotes.



05

Supply Chain and Vendor Challenges

Supply Chain and Vendor Challenges

Supplier

Vendors in Deir al Balah governorate reported to more commonly rely on a single supplier for shelter items, compared to Gaza and Khan Younis Governorates (14% in Deir al Balah compared to 11% in Khan Younis and 1% in Gaza).

>80% of vendors reported to rely on more than one supplier for shelter and non-food items, across assessed municipalities

Type Supplier

In Deir al Balah, Khan Younis, and Gaza, vendors most commonly reported relying on wholesalers as their primary source for shelter items. This was followed by reliance on vendors within Gaza who typically supply a large client base, as well as smaller vendors or individuals within Gaza who generally supply a limited number of clients.

Most reported operational challenges by vendors in the 7 days prior to data collection, per governorate

	Gaza	Deir Al Balah	Khan Younis
High cost of fuel/transportation hindering supply chain	46%	50%	49%
Difficulties with availability of core goods	47%	41%	51%
Wholesalers using their bargaining power to set unfair prices	32%	39%	19%
Price increases/high prices from suppliers impacts ability to buy stocks	31%	38%	31%
Difficulties accessing enough physical banknotes to pay suppliers	33%	30%	31%

Proportion of vendors reporting on access to a locked, secured storage facility, per governorate



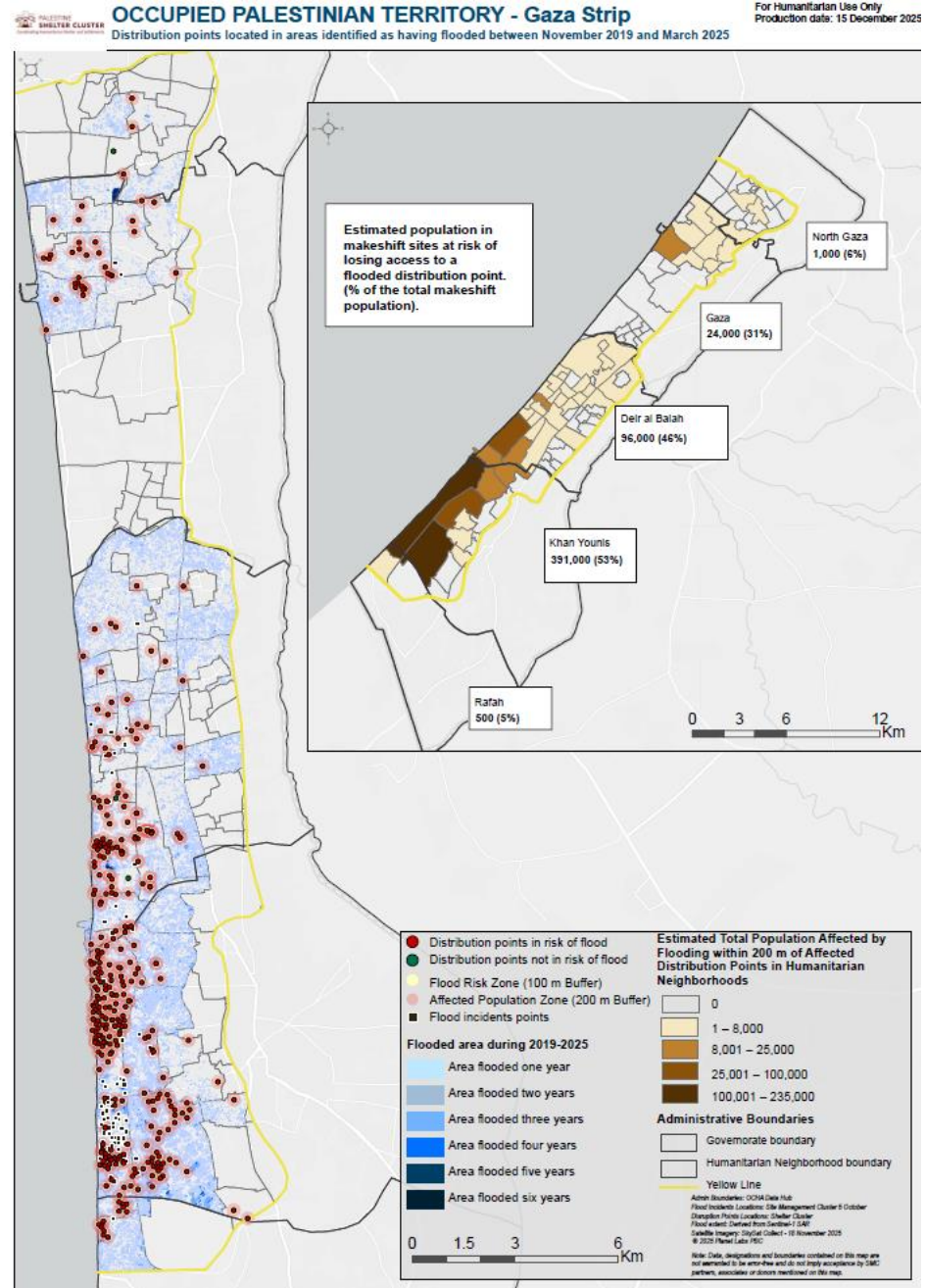


06

Shelter Cluster Flood Risk Mapping



Map Overview

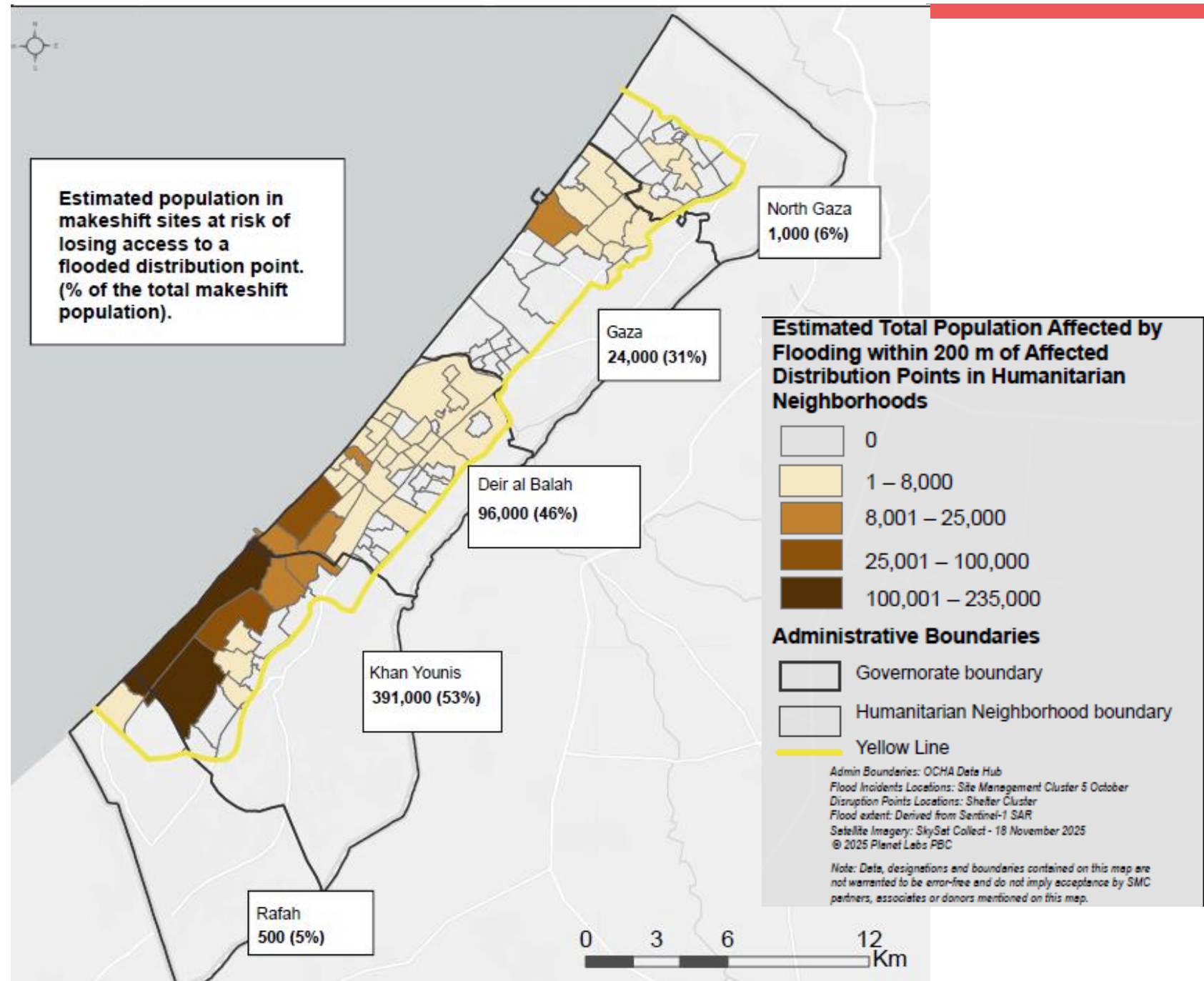


Methodology Overview

1. Flood risk historical layer For the period 2019–2025 using Sentinel-1 SAR data, 2-Flood incidents points
2. Flood incident points were provided by SMC and used to validate the extracted flood extent derived from the Sentinel-1 analysis. These points were spatially intersected with the historical flood layer to verify flood occurrence and accuracy.
3. Flood Risk Zone (100 m buffer)
Based on the IOM and ACACIA WATER methodology, flood risk is classified according to distance from previously identified flooding hotspots.
4. Affected Population Zone (200 m buffer) According to guidance from the Shelter Cluster, the flood impact radius varies depending on terrain, elevation, and shelter density.
5. Active Distribution Points (Shelter Cluster)
6. Estimated Population in Makeshift Sites

Population impact

1. Over 500,000 people in makeshift sites at risk of losing access to Shelter Distribution Points due to flooding



Population impact

